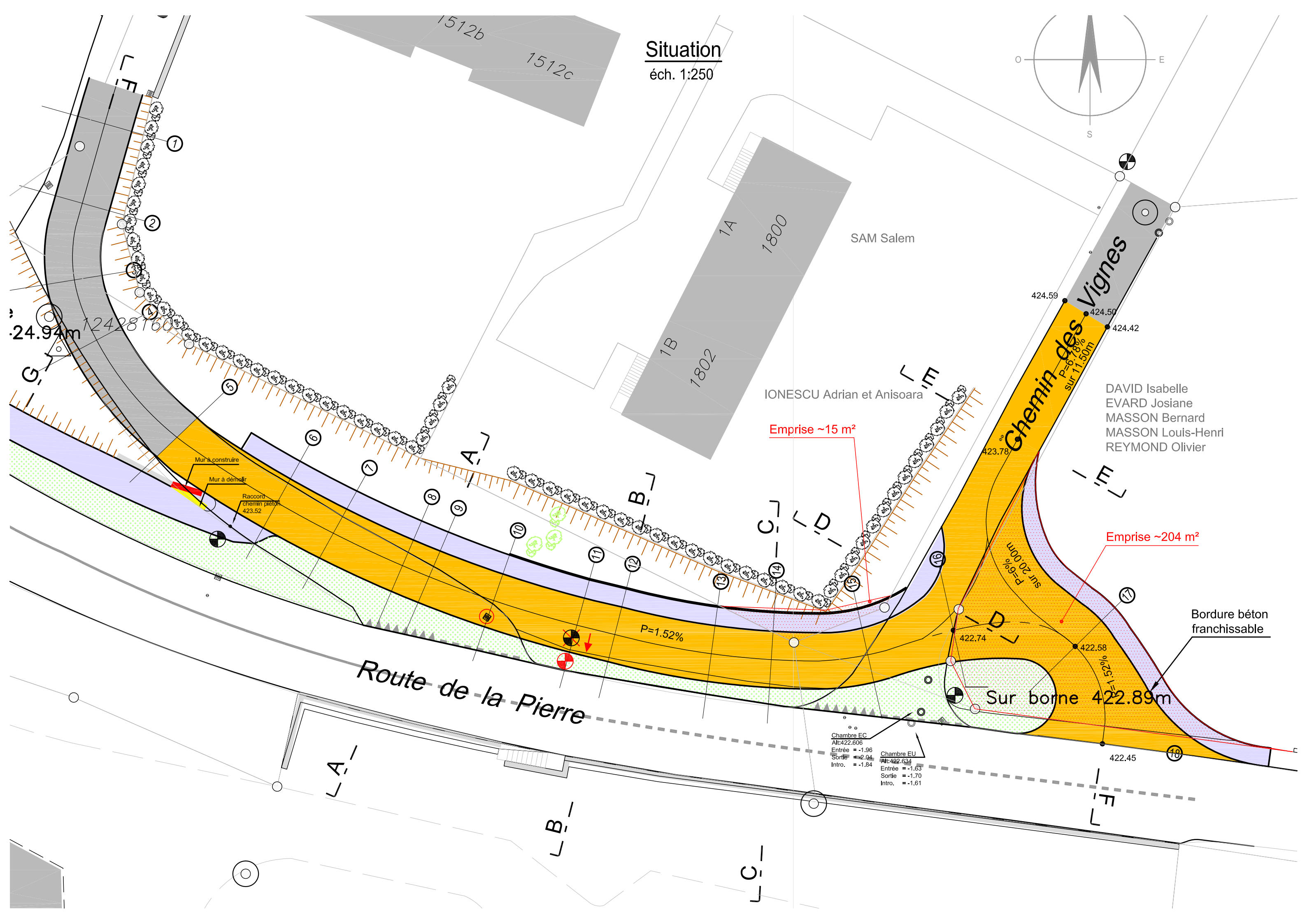
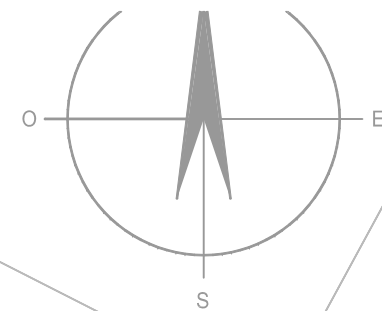


# Situation

éch. 1:250



SAM Salem

IONESCU Adrian et Anisoara

DAVID Isabelle  
EVARD Josiane  
MASSON Bernard  
MASSON Louis-Henri  
REYMOND Olivier

Emprise ~15 m<sup>2</sup>

Emprise ~204 m<sup>2</sup>

Bordure béton franchissable

Route de la Pierre

Sur borne 422.89m

Chambre EC  
Alt: 422.606  
Entrée = -1.96  
Sortie = 2.04  
Intro. = -1.84

Chambre EU  
Alt: 422.634  
Entrée = -1.63  
Sortie = -1.70  
Intro. = -1.61

1512b

1512c

1A

1800

1B

1802

Ghemin des Vignes

P=6.18%  
sur 11.50m

P=6%  
sur 20.00m

P=1.52%

P=2.5%

24.94m

24.28m

16.60m

1

2

3

4

5

6

7

8

9

10

11

12

13

14

15

16

17

18

A-A

B-B

C-C

D-D

E-E

F-F

G-G